

# **Network Printer Wizard Quick Start Guide**

## Table of Content

Printer Setup on Windows XP/VISTA .....	3
Network Printer Wizard Installation .....	3
Printers Set up .....	6
Remove the Printer Setting .....	14
Remove the Program.....	15
Printer Setup on Mac OS X™ .....	17

## Printer Setup on Windows XP/VISTA

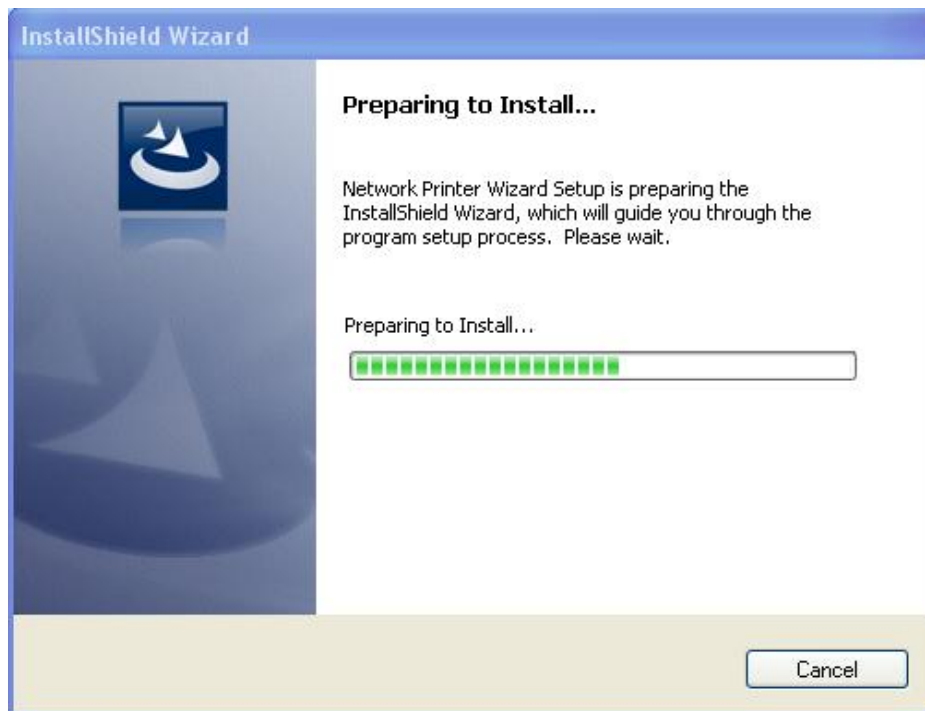
EST provides a straight forward and easy-to-use utility that helps you to set up USB printers connects to EST's LPR printer server as network printers, Network Printer Wizard. This utility reduces the dozens of steps in setting up network printer via Windows build-in printer setup program to a few point-and-clicks with the mouse. Users no longer need to deal with the confusing IP setting, queue name entering and port configuration.

### Network Printer Wizard Installation

To start the installation, please double click on the installer:



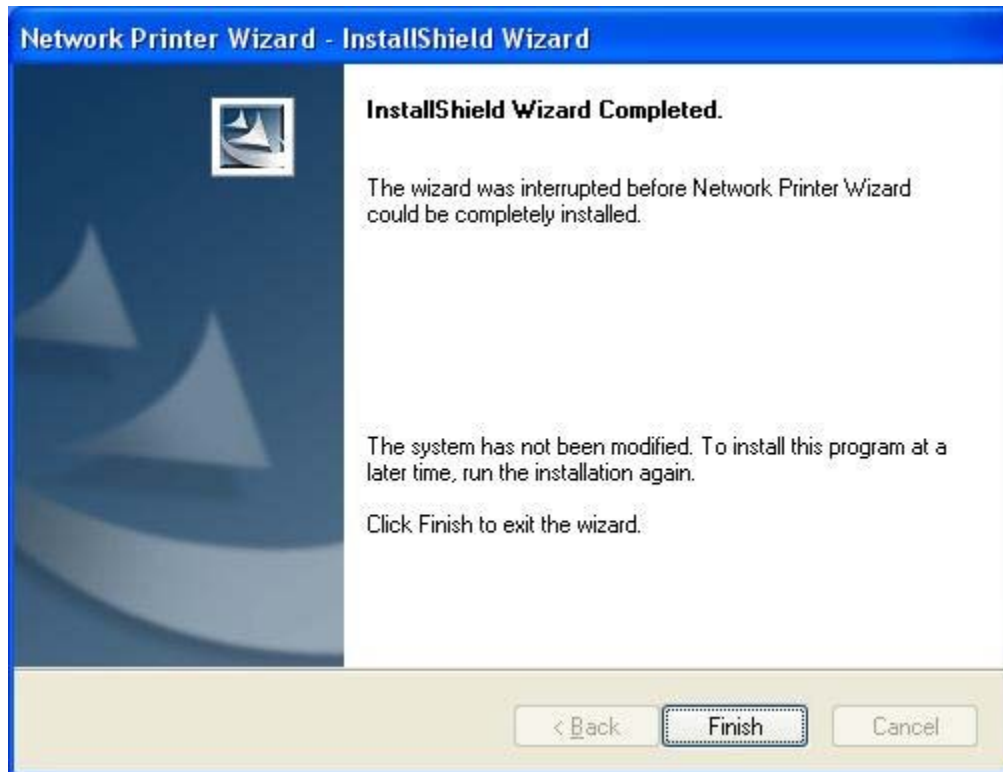
Wait for the installer to run:



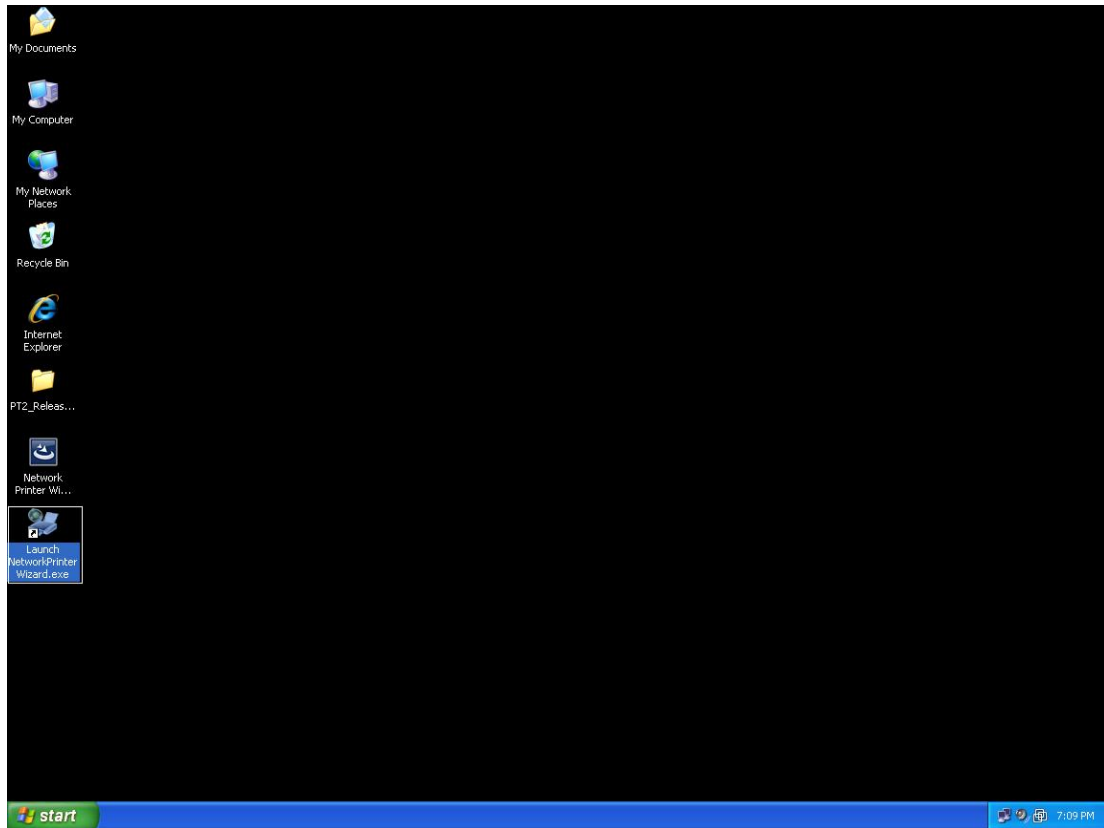
Select the installation language and click on **OK**:



Click on **Finish** to exit installer once installation completes:



The installer creates a shortcut on the Desktop for you:



## Printers Set up

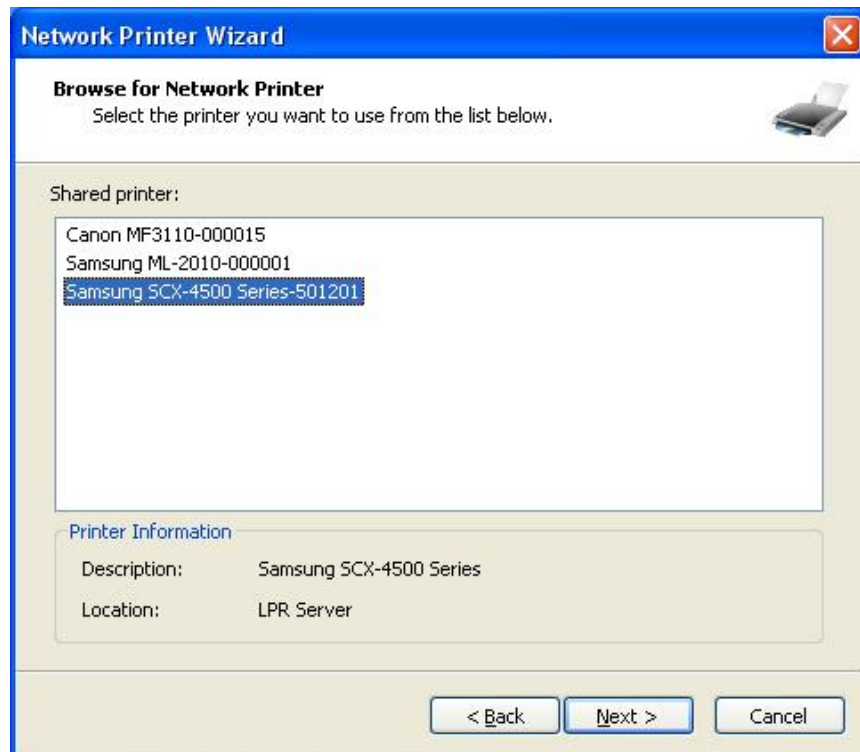
1. Now we can start setting up your printer. Please click on the Launch NetworkPrinterWizard icon created on the desktop.



2. Please click on **Next** to continue when you see this welcome dialog box.

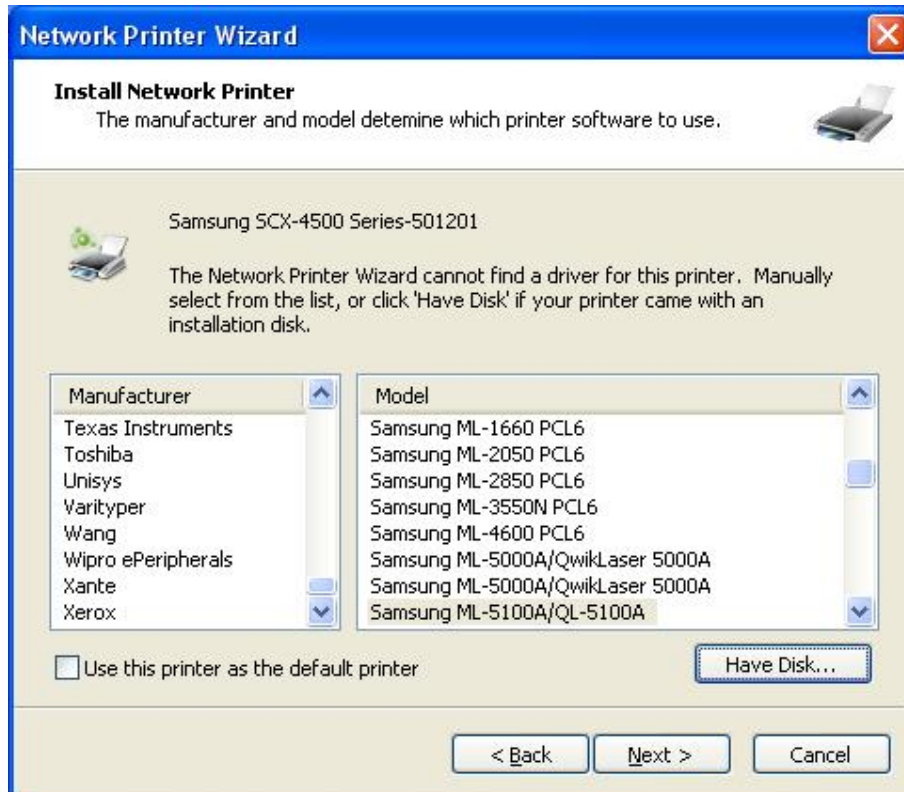


3. Please select the printer you would like to setup on this list and then Click on **Next**. The number of printers you see on this list depends on the number of printers that are connected to your network. If you only have one printer on the network, you see only one printer on this list. **If you don't see any printers, please make sure your printers and EST LPR Printer Server is correctly powered on and connected to the network.**

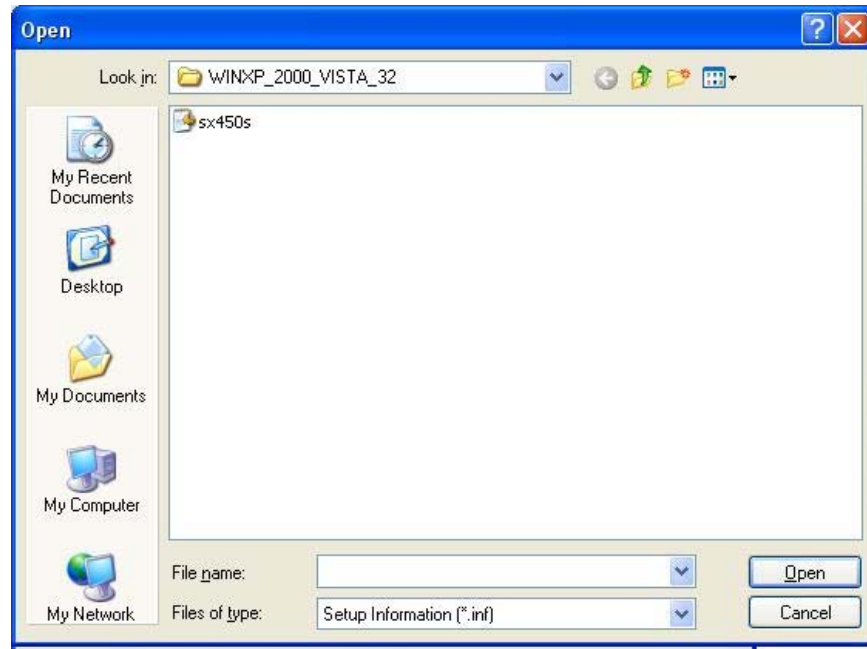




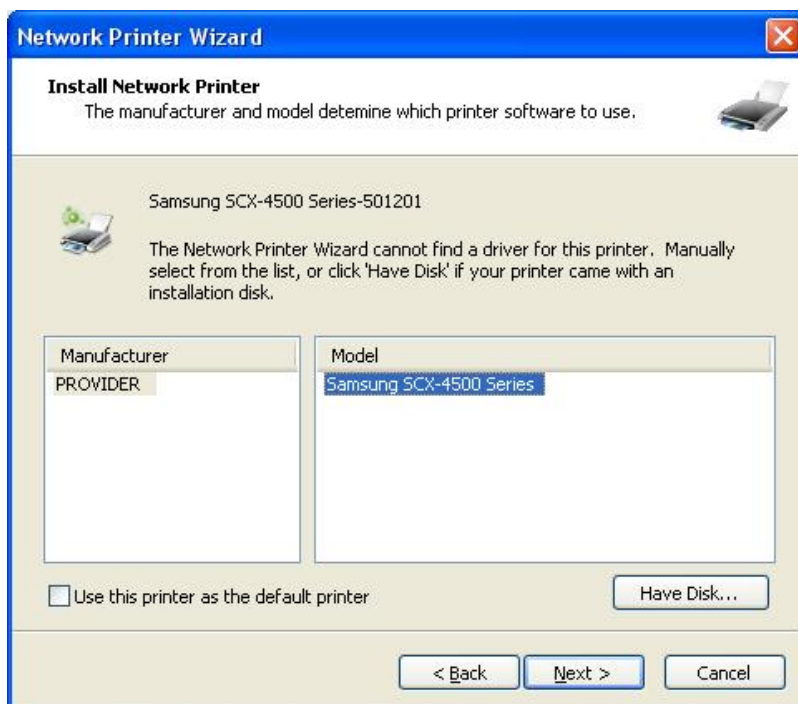
4. On the next dialog box, please select the driver from the list if it's there, and then click on the **Next** button and go to **step 7**. Else, read on.
- If you can't find the target printer's driver on the list, please insert the disk containing the printer's driver, click on **Have Disk...** button then go to step 5.



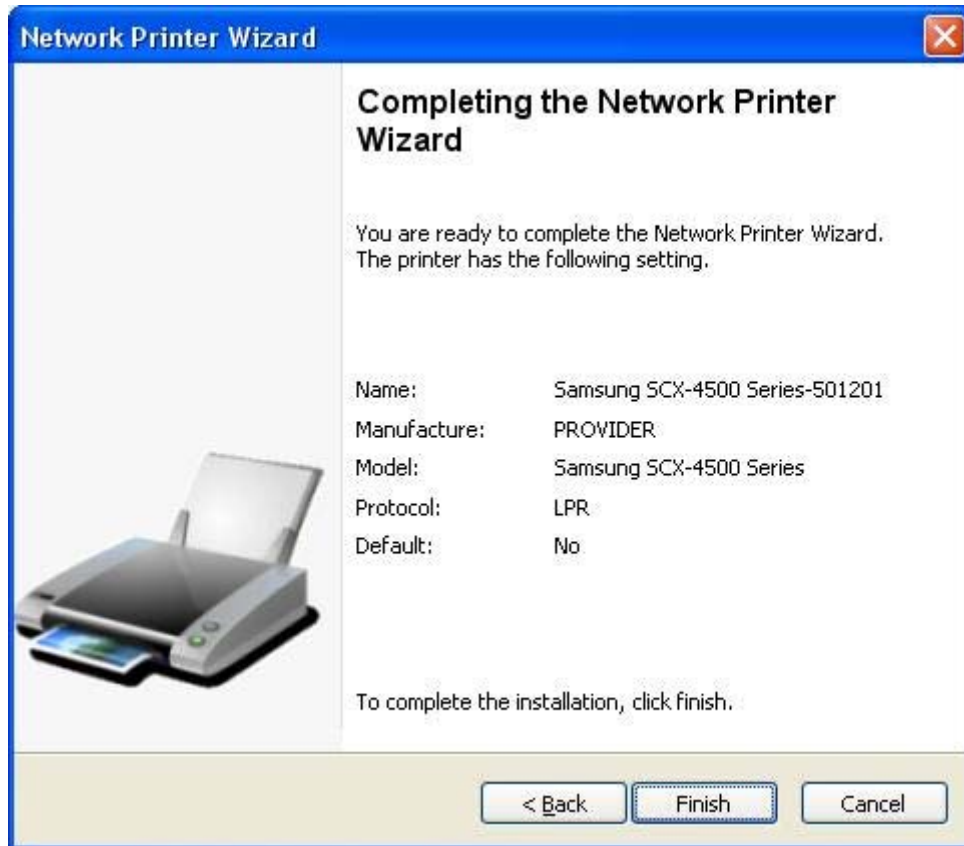
5. You must browse to the folder that contains the driver for your printer and click on **OPEN** to use it:



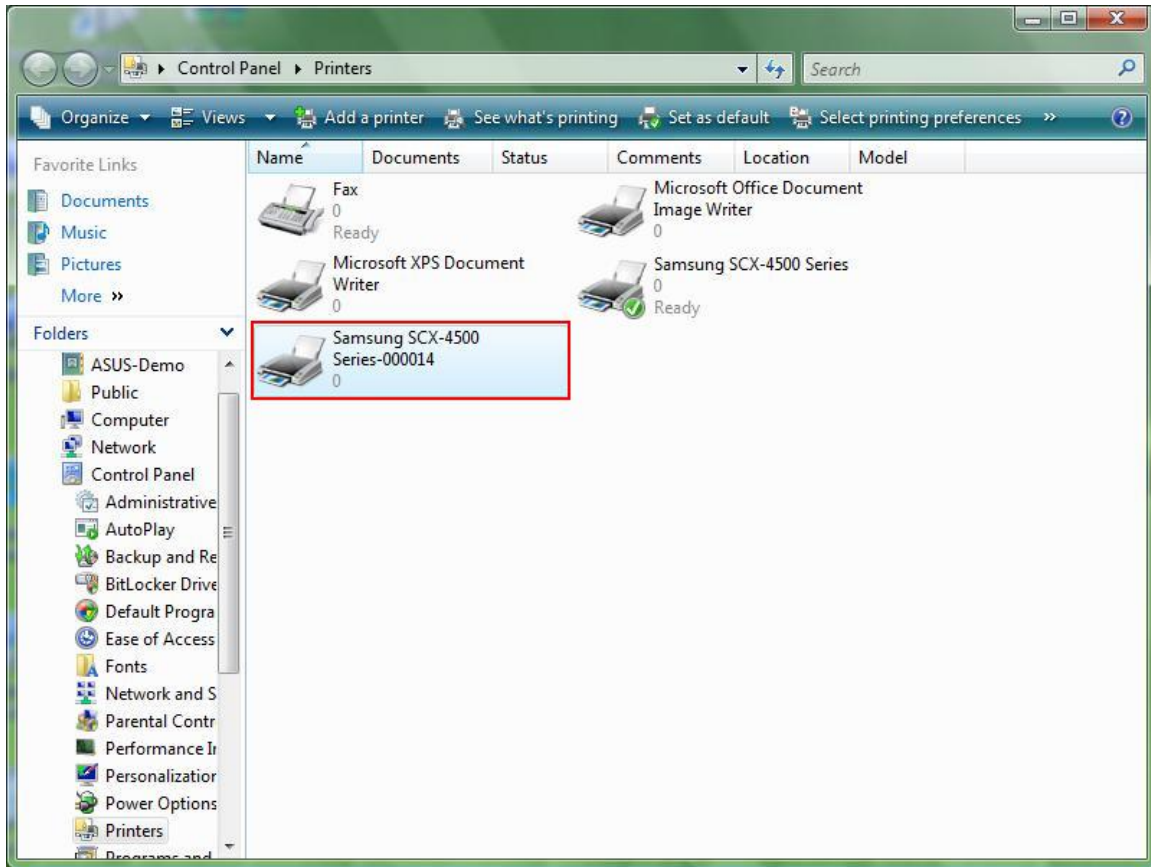
6. Then, select the driver from the list again and then click on the **Next** button. If you didn't select the correct driver, here is the chance for you to verify. Please click on **Have Disk** again to re-select.



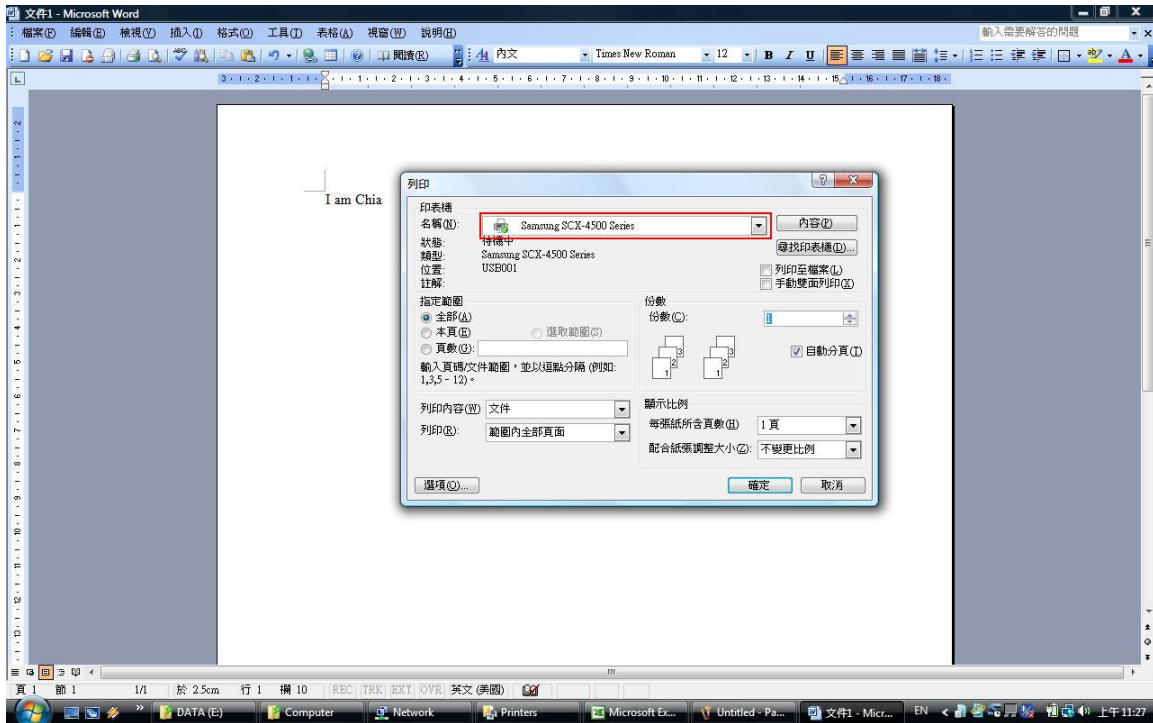
7. Once you have selected the correct driver from the list, please click on **Finish** button. The wizard might take a minute to setup the network printer for you.



8. After the printer has been setup correctly, you can see it under **Control Panel**  
**> Printers:**



Now you can print any document using the printer you just setup:

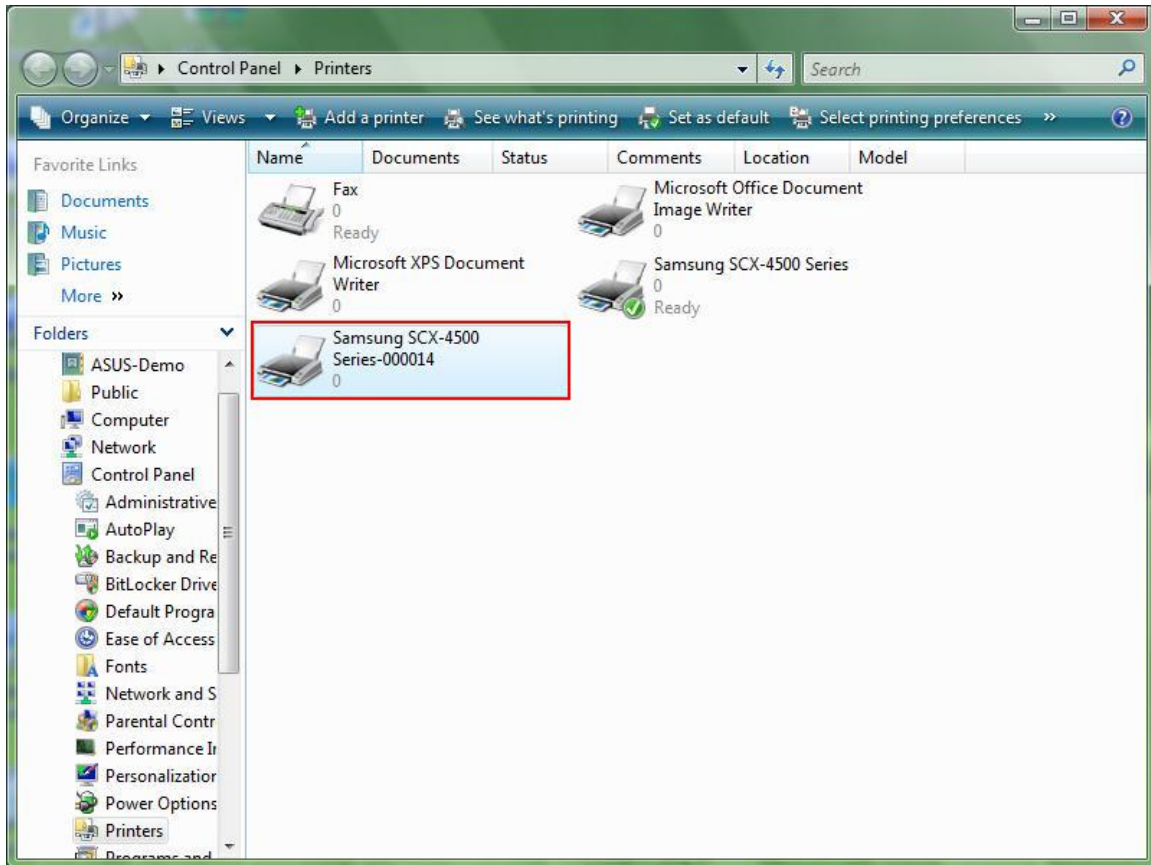


If you have more than one printer set up, please make sure you have selected the correct printer to print.

**NOTE: REMEMBER, THIS SETUP IS A ONE-TIME THING. YOU DO NOT HAVE TO RUN THIS PROCESS EVERY TIME YOU WANT TO PRINT. HOWEVER, OF COURSE, IF YOU REMOVE THE NETWORK PRINTER WIZARD PROGRAM, YOUR PRINTER SETUP WILL NO LONGER WORK.**

## Remove the Printer Setting

To remove the printer setup, please go to the **Control Panel > Printers** dialog box and remove the printer entry from it.

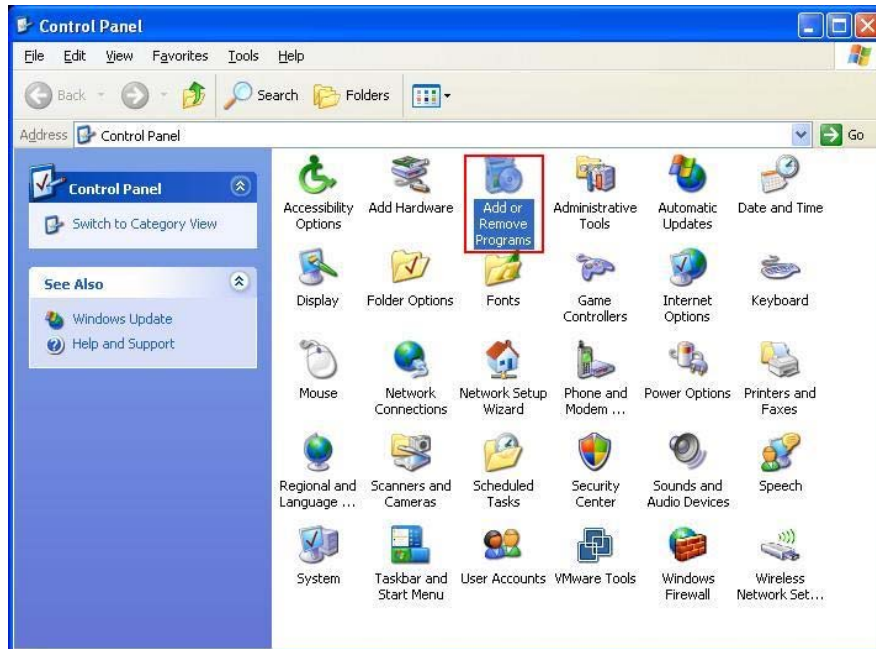


Simply **Delete** this icon by pressing **Del** key on your keyboard. Then it will be removed from the list of usable printers when you print document.

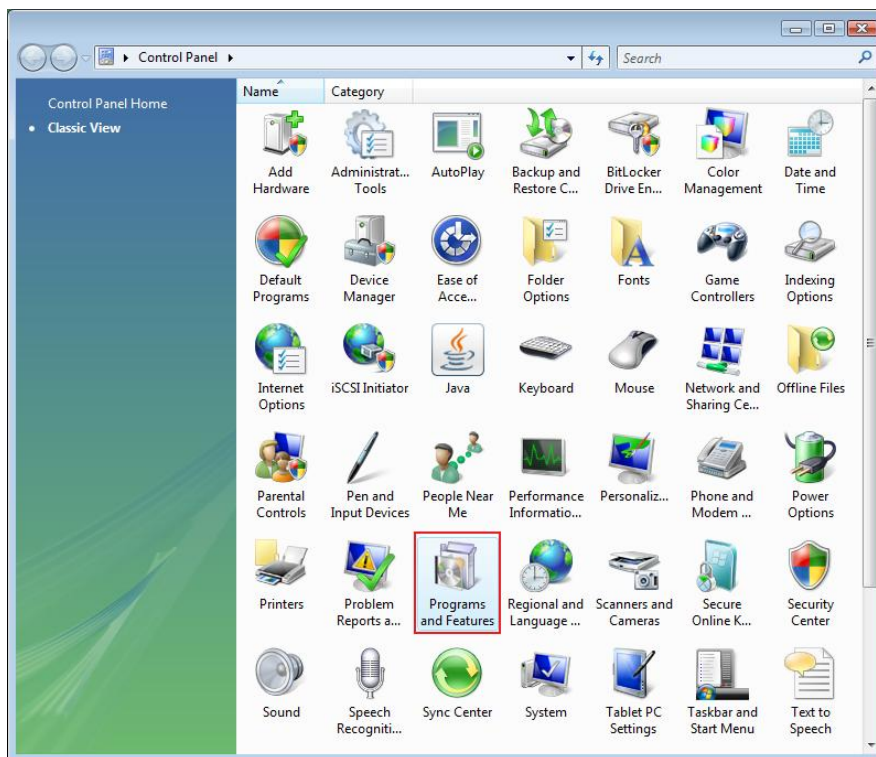
## Remove the Program

To remove the Network Printer Wizard program, please go to the **Control Panel**

> **Add or Remove Programs (Programs and Features on Windows VISTA)**



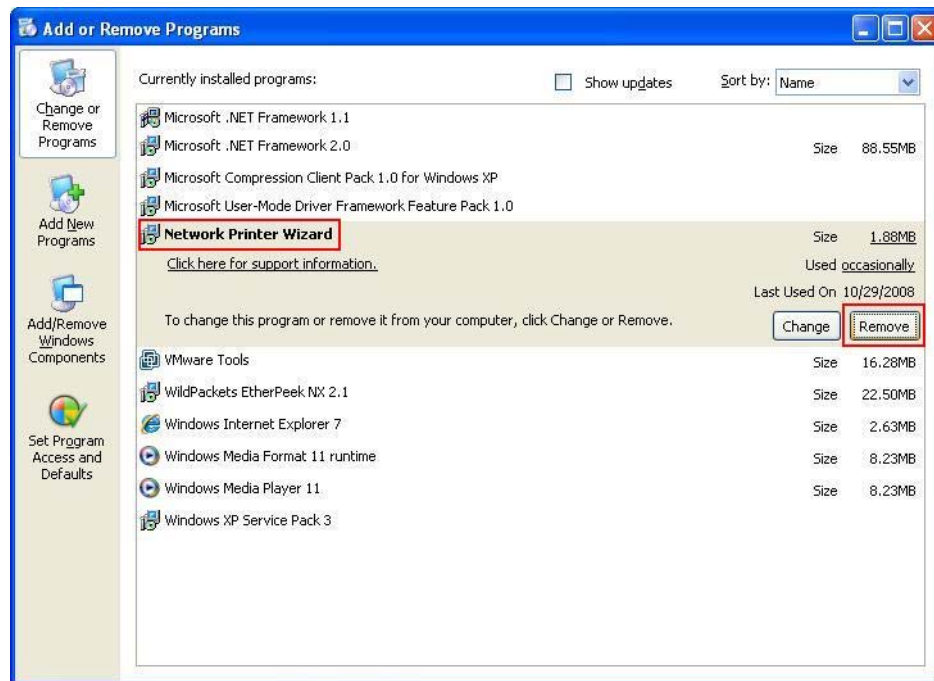
## Window XP



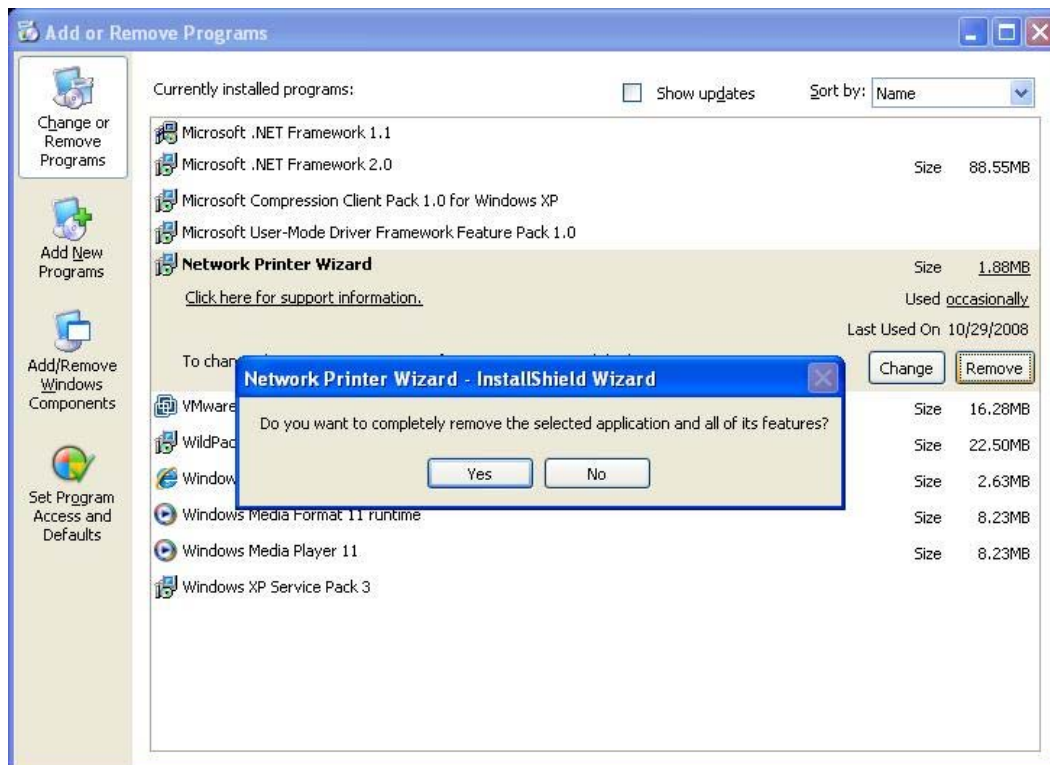
## Windows VISTA



Then select to remove the program



Then follow the instructions of the installer complete the removing process:



**PLEASE NOTE:** Once you remove this problem, you will no longer be able to print using the printers you setup with Network Printer Wizard

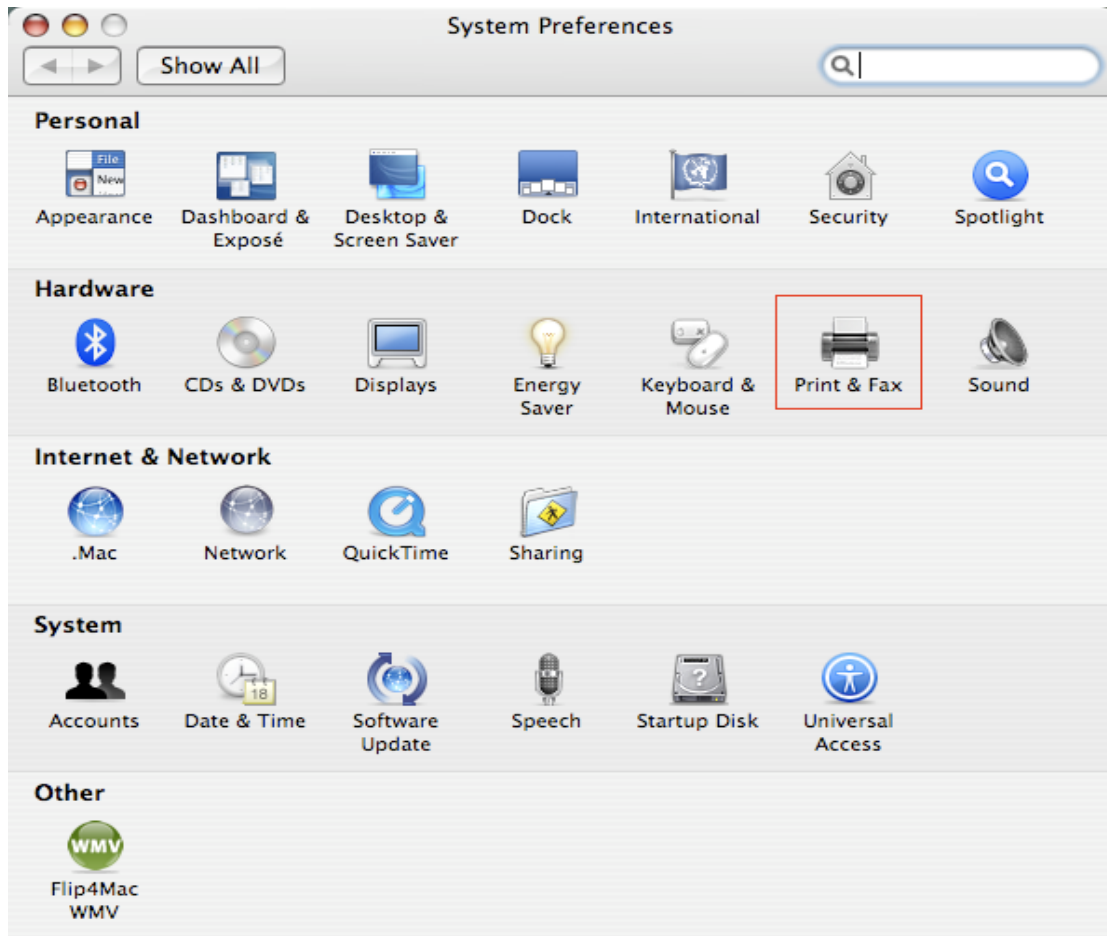


## Printer Setup on Mac OS X™

1. MAC OS by Apple Inc. comes with a built-in utility very similar to Network Printer Wizard. To start, please go to “System Preferences” on the Dock menu:

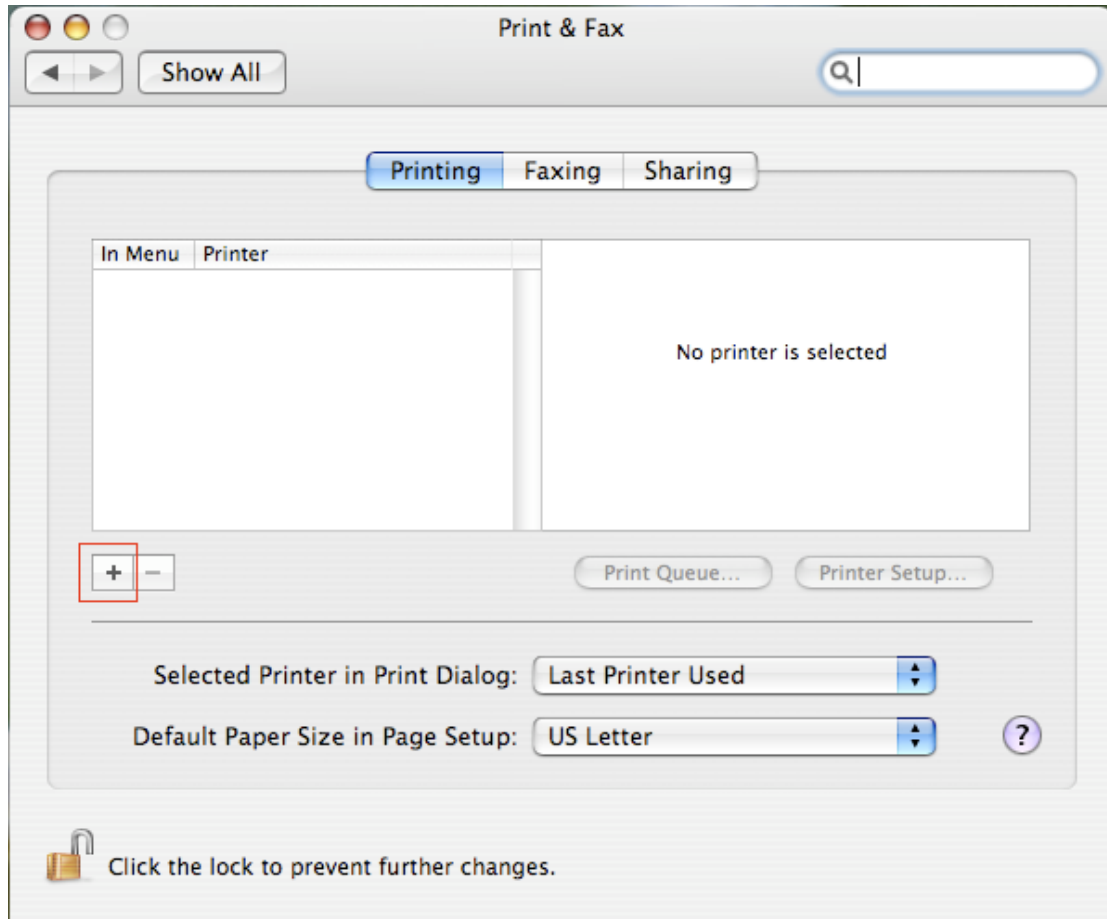


2. Once you have the “System Preferences” window up, please locate the “Print & Fax” item:

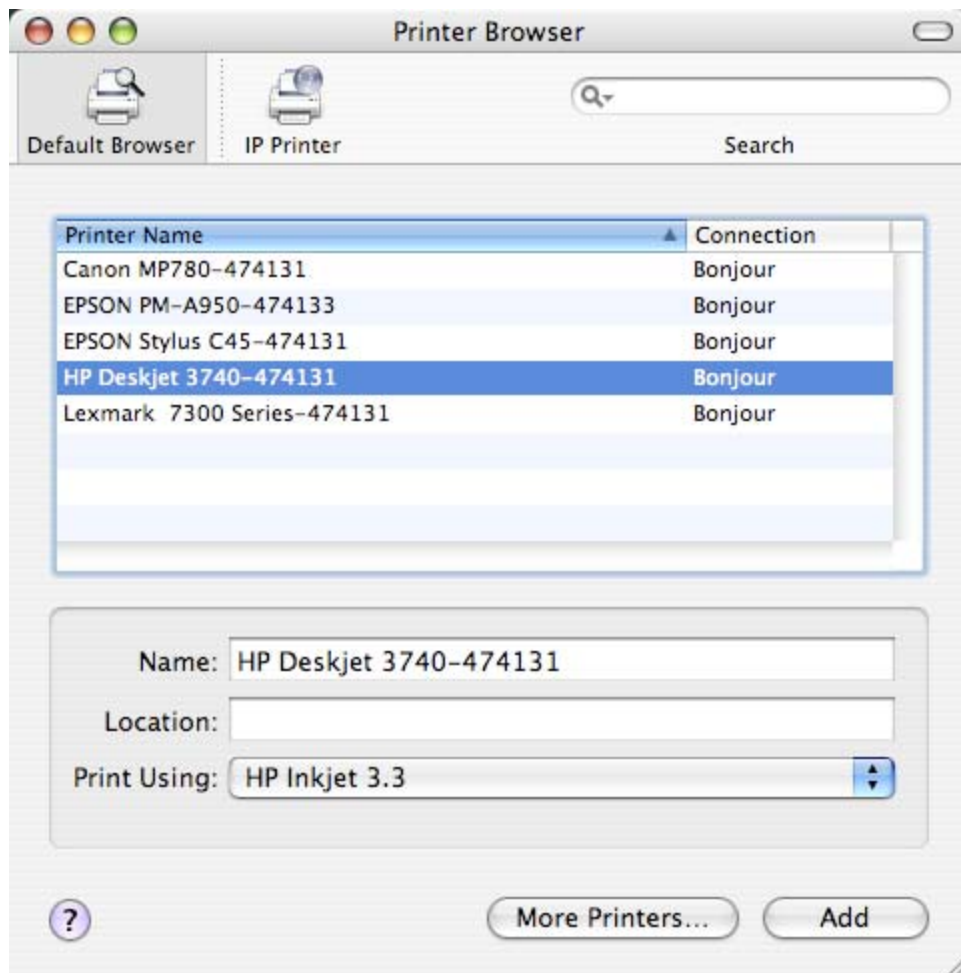


Double click on “Print & Fax” to start selecting printer for installation.

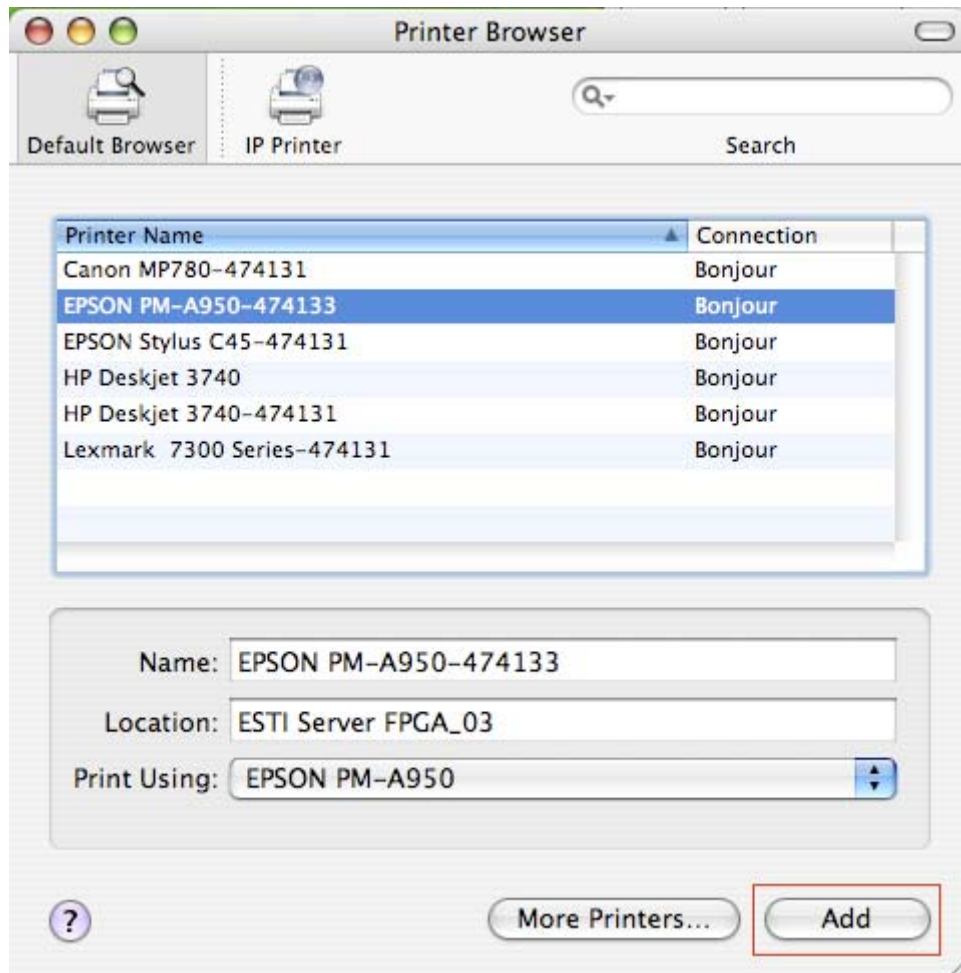
3. This window shows you the printers that have been installed on your Mac. To install a new printer, please click on the “+” button to select printers.



4. Select the printer you would like to setup from the list. The number of printers you see on this list depends on the number of printers that are connected to your network. If you only have one printer on the network, you see only one printer on this list. **If you don't see any printers, please make sure your printers and EST LPR Printer Server is correctly powered on and connected to the network**

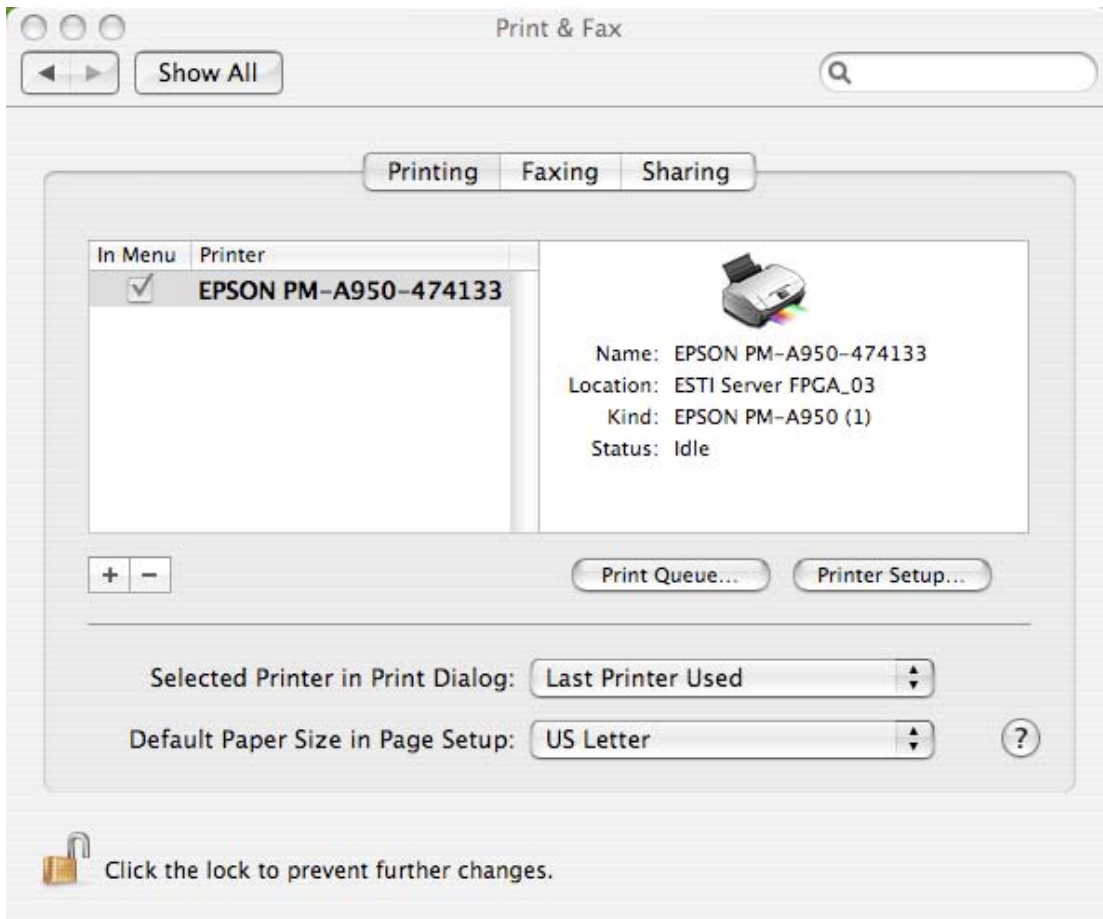


5. As you select the printer to install, Bonjour will select the correct printer driver for you and is shown at the “Print Using:” field:



Once you have highlighted the printer to install, click on **Add** button to install it.

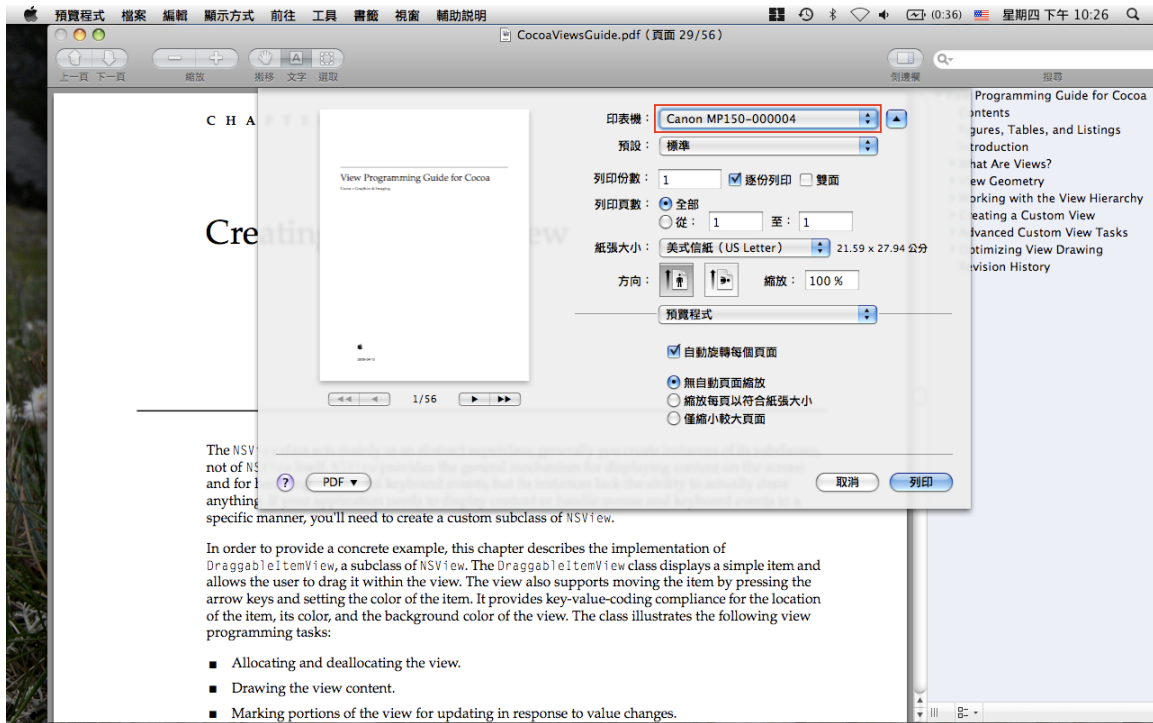
6. Once installation is done, you should be able to see this on your “Print & Fax” window:



You will see that the A950 printer appeared on the available printer list. You can now use this printer for printing your documents or pictures.

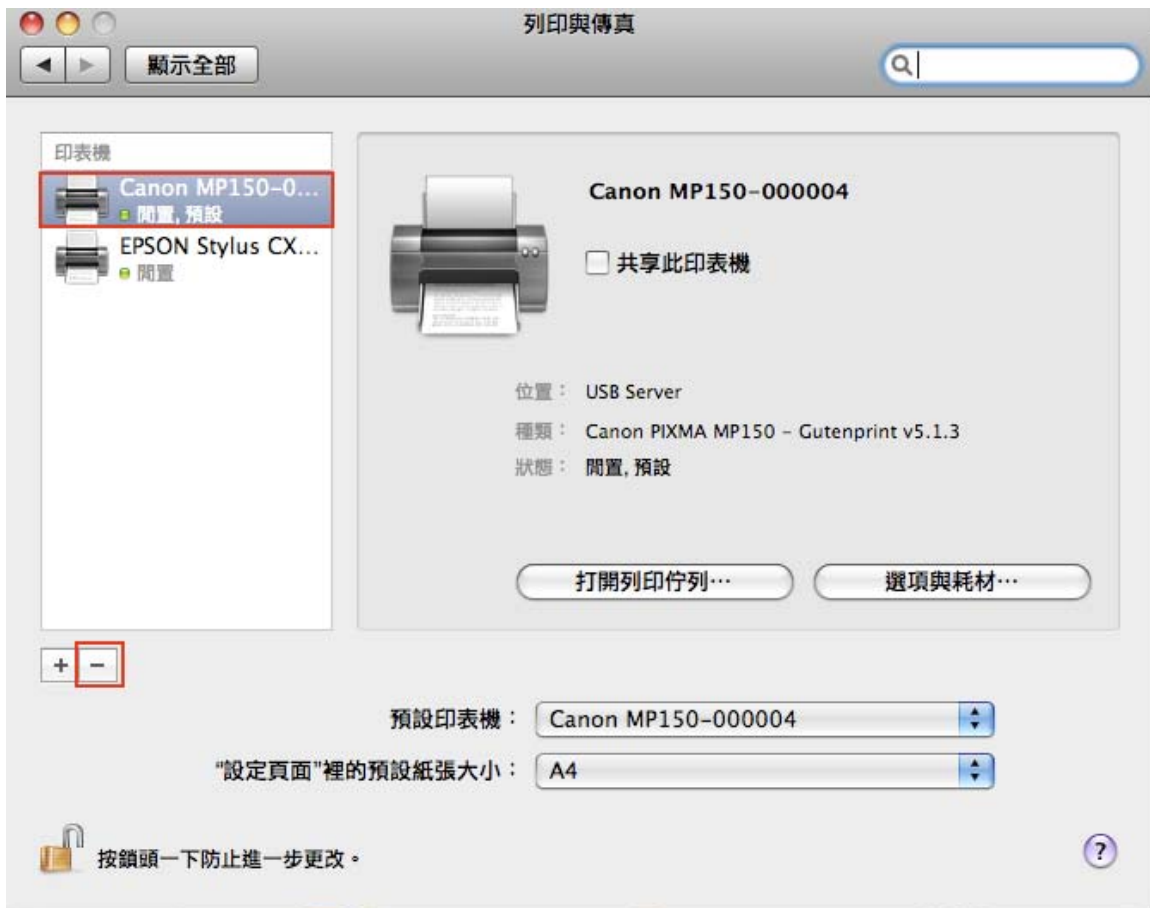
**NOTE: REMEMBER, THIS SETUP IS A ONE-TIME THING. YOU DO NOT HAVE TO RUN THIS PROCESS EVERY TIME YOU WANT TO PRINT.**

7. When printing your document, simply select the printer you just setup on the available printer list:



## Removing the Printer Setting

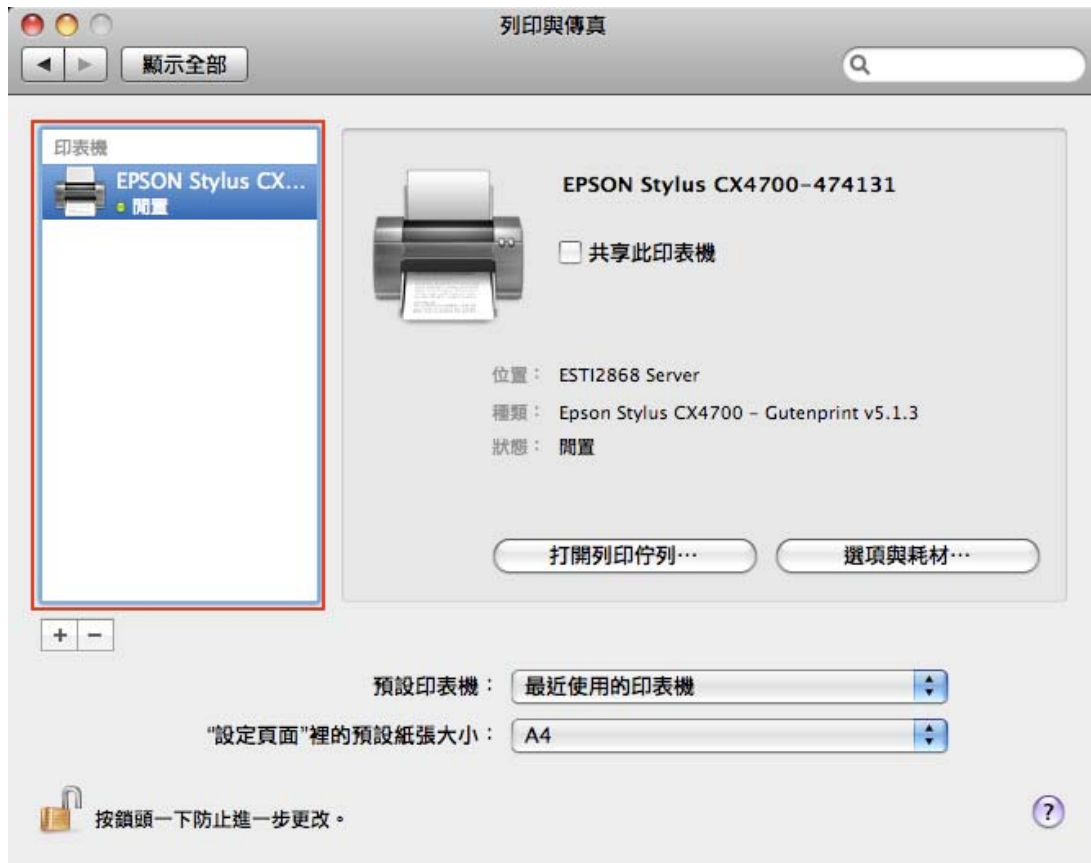
1. To remove a printer setting, please go to your Printer and FAX again:



Select from the available printer list on the left and then click on the “-” button to remove it.



2. Once removed, the printer will disappear from the list



And when you print document, you will not be able to select it anymore.

